



ROS-Industrial: An Open Source Case Study

Shaun Edwards

Senior Research Engineer

Southwest Research Institute





Presentation Goals



- Motivate others to start open source efforts/programs that build on or are related to ROS
- Encourage developers to actively participate





Agenda



- Emergence of multiple programs out of the ROS community
- ROS-Industrial: case study
- Importance of these programs
- Conclusions





Emergence of Programs

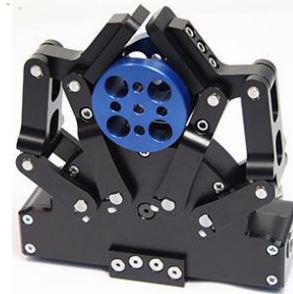


- ROS' greatest strength is community
- Programs are larger than a single package, organized, and maintained
- Most are technology focused, ROS-Industrial is market focused
- Sampling of programs
 - SIGs
 - Webtools
 - MoveIt
 - PCL
 - Ecto
 - ROS-Industrial
 - Embedded
 - More (I want to know about them)





ROS Industrial Case Study





Background



- ROS-Industrial program aims to leverage ROS for industrial applications
- Primary objectives:
 - Developing technology (software)
 - Creating a community of researchers and developers
 - Engage robotics and automation industry

- More detailed info:

<http://www.youtube.com/channel/UCXyGVRiCwUMc1gav-G7z2ew>





One Year Video



- <http://www.youtube.com/watch?v=Ek8GKqmJ7n0&feature=youtu.be>





Benefits to SwRI



- Increased name recognition in the area of industrial automation R&D
- Dozens of new contacts (potential clients and collaborators around the world)
- Several R&D project awards
- Initiation of the ROS-Industrial Consortium (potential for more funded R&D)
- European ROS-Industrial effort led by Fraunhofer IPA
- Attracting top talent





Recipe for Success



- Inception
- Build it
- Brand it
- Promote early
- Document it
- Get others involved
- Fund it
- Benefit





Importance of Programs



- Establish multiple lines of support for a package (capability)
- Provide concrete/tangible opportunities for investment (especially market focused projects)
- Program needs can drive core ROS development
- Forces collaborators to consider broader applications





Conclusions



- Everyone should consider starting/joining a program (especially market focused programs)
 - Autonomous vehicles
 - Micro air vehicles
 - Medical robotics
- Programs can benefit the participants and the community
- All programs should work harder encourage greater involvement of all participants



Contact Information



Shaun Edwards

Senior Research Engineer

Southwest Research Institute

6220 Culebra Rd.

San Antonio, TX 78251

US

Phone: 210-522-3277

Email: sedwards@swri.org

www.rosindustrial.org

www.ros.org/wiki/Industrial

