

RoNeX



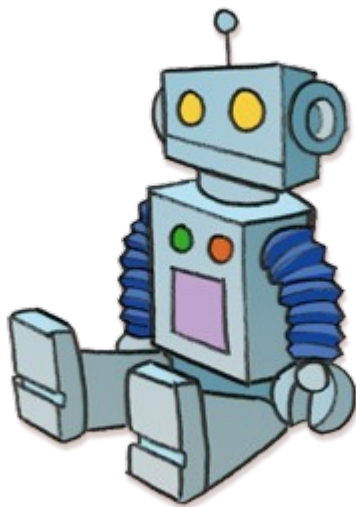
Ugo Cupcic
ugo@shadowrobot.com



RoNeX

Robot Nervous System

Hardware
Actuators
Sensors



11/05/2013

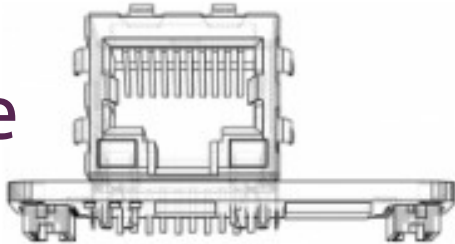
RoNeX



RoNeX

What is it?

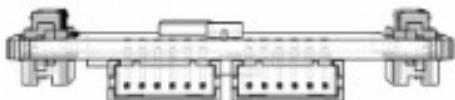
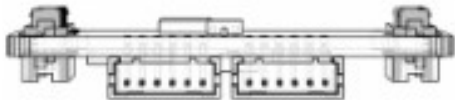
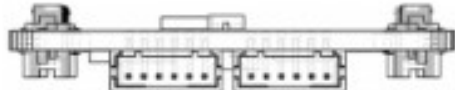
Bridge



PSU



Modules



EtherCAT

- Standard ethernet port
- 1kHz / 100Mbps

Customize each stack

- 5 modules per stack
- Future functionalities:
 - DC motor controllers
 - Stepper motors
 - EtherCAT out



RoNeX

<http://www.shadowrobot.com/products/ronex>