

Arm Navigation for the Neuronics Katana family of robot arms

Martin Günther
mguenthe@uos.de

May 11, 2013



The katana_driver stack



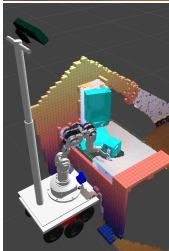
Katana family of robot arms:

- 5 DoF
- several variants (angled or straight gripper)

katana_driver stack:

- FollowJointTrajectory action server, JointState publisher, Gripper action
- URDF description
- full Gazebo simulation

The katana_manipulation and kurtana_robot stacks



What works:

- arm_navigation pipeline (motion planning, kinematics, trajectory filtering, collision map)
- object_manipulation pipeline (grasp planning, tabletop object perception, object manipulator)

Roadmap:

- support Groovy + Hydro (currently still Fuerte)
- MoveIt!